

Cowes Interclub Race Instructions

Saturday 27th September 2014

Rules

Racing will take place under the current ISAF rules of sailing (RRs), the prescriptions of the RYA, the 2014 Interclub rules and the individual race instructions for the event.

Eligibility and Entry

The race is open to all interclub cruisers and will be dual scored using PY numbers and the National Handicap for Cruisers System as agreed by Fareham Portchester and Hardway sailing clubs for the 2014 season. A boats NHC handicap will be adjusted after every race. An adjustment in handicap number is not the grounds for redress, this changes RRS 62. All competitors must sign on to race control on VHF Channel 37/M1 at least 5 minutes prior to the warning signal.

Failure to sign on to race at least 5 minutes prior to the warning signal will result in a result of DNS (Did Not Start)

Schedule

The scheduled start time is 12.00 and the warning signal (international code flag C) will be displayed at 11:55

The time limit for the race will be 6hrs

At the finish pass between Snowden to port and the Prince Consort Cardinal Mark and record your own elapsed time (This is the time taken to complete the course and **not** the time on your watch when you finish) and if possible the names and elapsed times of the boats ahead and astern. This data, your boat name and interclub number should be provided to Russell Peace via E:mail to Sailing@portchestersc.org or by SMS Text to 07800561469 by **19.30 on 27th September 2013. N.B. Failure to provide the above information by the 19:30 deadline on 27th September will lead to a result of DNF being recorded**

Any boat which does not complete the race and chooses to retire must communicate this decision to race control by SMS Text Message to 07800 561469 or by E:mail to Sailing@Portchestersc.org

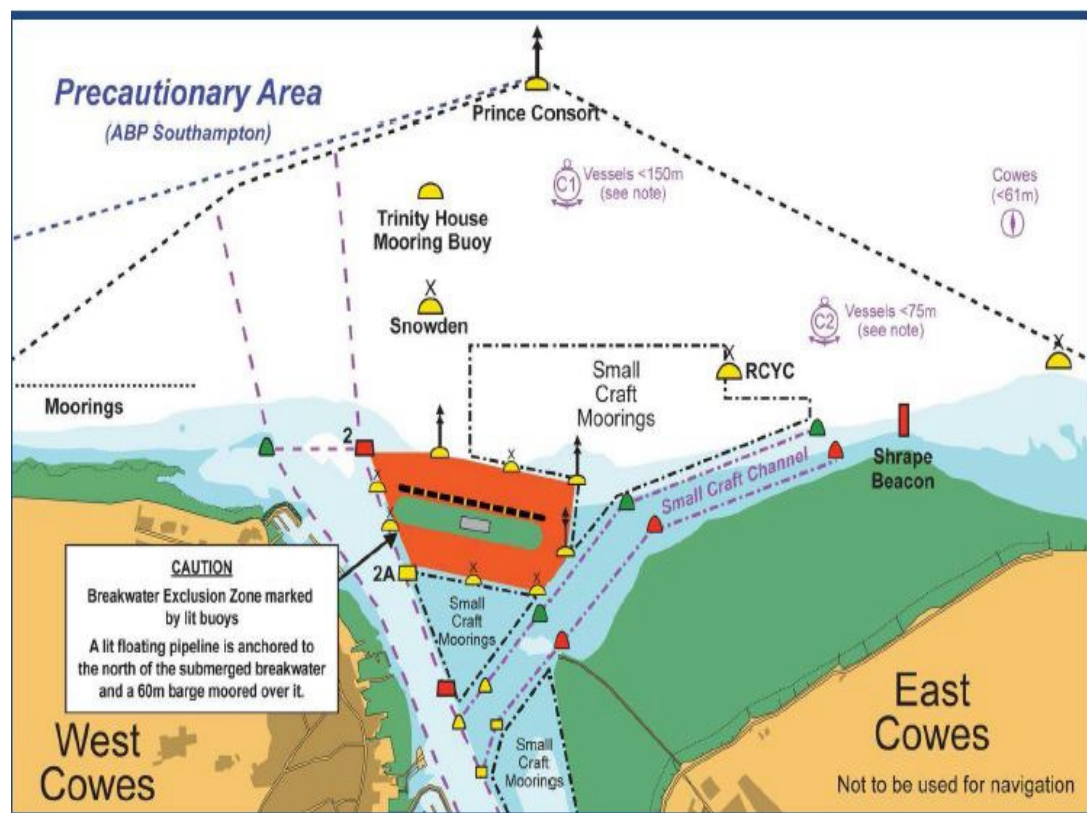
Start Line

Committee boat and Gleeds Buoy

Finish Line A line between Snowden and Prince Consort leaving Snowden to port.

Cowes Breakwater Exclusion Zone (CBEZ)

Boats shall not enter the CBEZ which is marked by IALA buoys, and has been established off Cowes. The CBEZ will rank as an obstruction for the purposes of RRS 19 and 20. The diagram below shows the CBEZ. Boats, whether racing, or those which have finished racing and in whatever direction they are sailing, shall always remain outside the CBEZ.



<p>Course A. Start: Committee boat / Gleeds Darling Associates (P) North Sturbridge (S) The Ranges (P) Kemps Quay (S) Peel Bank (S) North East Ryde Middle (P) Norris (S) Finish</p> <p>Distance 15.5 Miles</p>	<p>Course B. Start: Committee boat / Gleeds Darling Associates (P) Kemps Quay (S) The Ranges (P) Clarence Boat Yard (S) South East Ryde middle (P) Rolly Tasker Sails (S) Sunsail (P) Finish</p> <p>Distance 12.7 Miles</p>
	<p>Course S (short) Start: Committee boat / Gleeds Darling Associates (P) Norris (S) Finish</p> <p>Distance 7.25 Miles</p>