

Founded in 1850

C
L
O
S
E

Q
U
A
R
T
E
R
S

*The official newsletter of the
Fareham Sailing & Motor Boat Club*
March 2017



The 'Dynamic Duo' raising money for MS Trust
by cycling from London to Paris

Contents	
Page 2	Lost and Found from the Bar - Pam Carr Editorial Bistro Night Report - Sally Brennan
Page 3	Forthcoming events
Page 4&5	MS Fundraising update - George Thomson Fundraising Night Report - Sally Brennan Letter from MS Trust
Page 6	Images of Charity Night - Compiled from photos by Bob Brennan
Page 7&8	QHM Navigation warning. Portsmouth Harbour Approach - Taken from QHM website
Page 9	Images of Bistro Night - from photos by Bob Brennan

To contact the editor
please e-mail

publicity@fsmbcnet.org.uk

Please try to get your
articles, pictures, adverts
etc. to the editor by the
20th of the month to
ensure their inclusion in
the following month's
edition.

News from the Bar

Lost & Found

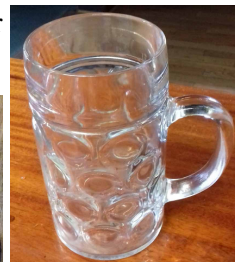
A few items have been left in the bar in recent months and no-one has collected them as yet, so we thought we may bring them to your attention.

Found: as you can see from the attached photos there is a 2 pint jug (for the larger drinker ??), a pair of prescription glasses in a 'sinner' bag (interesting ?), a pair of sunglasses and a dangly earring.

If anyone recognises any item please let me know and I can get the item back to you.

On the 'lost' section; has anyone seen a green plastic 2 pint (or thereabouts) container. It has a green base, about 10 inches tall, round with a narrowing base for easy handling, with a light green lid with a pourer section. May seem daft, but it has sentimental value. It was left in the bar just last week so if anyone has borrowed it, no problem, but can I have it back please?

That's all for now folks. Thanks all. Pam



Editorial

A short editorial this month (thank goodness I hear you say) as we are getting ready to take our boat Macavity out of the water for a bit of pre-season therapy. By the time of re-launch the owners will be the ones in need of therapy. Still, it all has to be done to avoid as many mishaps as possible during our summer cruising. 'A stitch in time' and all that!

As you can read in the reports from our Social Events Administrator, Sally Brennan, we have recently had a couple of extra events in the Clubhouse and both were successful and well attended. Long may this continue. Keep checking for forthcoming events and enjoy the fun.

The same applies to the sailing events. The organisers work hard to ensure that these events run smoothly so that you can enjoy yourselves by participating or spectating. Look out for races, cruises and special events. Put this command line in your smart phone browser and check out the action:

<http://www.myclassicboat.com/Classic-Features/Fareham-Luggers/mobile/>

Talking of reports on social events I am embarrassed to include Sally's report of the Bistro Night lest I be accused of basking in my own glory. However, as Sally is the most regular contributors to this rag, I dare not upset her!

Bistro Night Report

Sally Brennan

Well Gaynor, this one is all about YOU !!!!

25 People sat down to an amazing four course meal last night at the club. Where to begin?

Along with your helpers, Linda and Lyse, not only did you manage to produce first class food cooked to perfection, worthy of the highest restaurant in the land, you also presented it so beautifully.

The anti pasti was so tasty. That was a surprise to me as I'd forgotten that this was on the menu and along with the lovely warm bread and balsamic vinegar, I was quite full up - and that was only the beginning!

Next came the starter of tomato and mozzarella salad, again so nicely arranged, as though you had a team of kitchen helpers all plating up their separate dishes (I could imagine you shouting "hurry up you're running late and I will not have my diners waiting") or words to that effect ??? (*No shouting, but the word 'PANIC' was uttered once or twice!! Ed.*)

On our table I was able to see both of the choices of main course. For me the chicken and risotto was delicious and the lasagne looked amazing and SO much, with the garlic bread.

As if we were not full up by this time, out came the puds, The panna cotta with fresh berries was so refreshing and the tiramisu ...well, as I had a taste of both, it was hard to make a choice of my favourite one. Suffice to say I think you are in the wrong business Gaynor. I have to confess that I was even offered some cheese and biscuits, which I brought back to our table to share. Your choices of cheese were spot on too. Add to all that a few glasses of wine and stimulating company, we couldn't have enjoyed ourselves more if we had paid to visit an expensive restaurant.

All that is left to say is an enormous thank you for all your hard work Gaynor, for your good humour throughout and of course to Linda and Lyse. You must have been exhausted!

Next time I'm sure most of us would be prepared to pay much more for such wonderfully cooked and prepared food. (*What do you mean 'Next time' Sally? PANIC !!! Ed.*)

Forthcoming Events

**ST. GEORGE'S DAY
VICTORIAN FAIR
SATURDAY 22nd APRIL 2017
(DAVE HURST DISCO)**



7.30pm 'till LATE - IN CLUBHOUSE.

Dress up and have fun.
(Victorian costumes)

Food provided.

TICKETS £10.00 EACH



Easter Bank Holiday Cruise
Sail East for a change

*Enjoy the company of
your Sailing Club friends*

*Dine out in company at
a venue to be arranged*

Depart Friday 14th April

Dine out Saturday 15th

Return Sunday/Monday 16/17th

*Interested? Contact Ian
on Mobile: 07796090637 or
email: ian@saxil-nielsen.com*

ST PATRICK'S

Sat 18th MARCH 2017

BAR OPEN AT 7.30PM — NIBBLES

"Fareham Creekers"

What the papers say about the Fareham Creekers:

"I was Gobsmailed!!" The Sun, 8th Sept 2016

"Rather Pleasurable" Knitting World, Oct 2016

"Where's the flute player" The Times, 10th FEB 2017

"I can't hear the Accordion!" The Economist

"People should buy them more drinks!" News of the World, 8th Jan 2017

"The Creekers version of SUGAR SUGAR was weird" ... Daily Express, Jan 10th 2015

BIG PADDY RAFFLE

GET YOUR TICKETS FROM MARGARET!!!

Club Games Night at the clubhouse

Join in the fun with
board games, card
games and much
more

Friday 3rd March

Any items for inclusion in
the April edition to be
emailed to
publicity@fsmbcnet.org.uk
by 20th of March



MS Trust Fundraising Update

George Thomson.

A huge thanks to everyone who attended and made donations to the MS Trust. We raised £1266 pounds on the night which brings our grand total to £3027 so far. The evening certainly would not have been a success without the help from Linda in the galley, the Fareham Creekers, the bar staff, Sally running the raffle, those who donated prizes, Bob and Ian for the awning and of course Liz, Linda, Margaret and Steve for providing the food.

Chris Hare and myself are now 6 weeks into a 16 week training schedule in preparation for the big ride from London to Paris on 10th May over 4 days.

You can sponsor using the link below :

<http://uk.virginmoneygiving.com/GeorgeThomsonChrisHare>

Once again a massive thanks to everyone for Friday night and to those who have already sponsored on line.

Fundraising Night Report

Sally Brennan

On Friday February 24th a large crowd gathered in the Club to raise money for the charity Multiple Sclerosis (a charity close to George and Liz Thomson's hearts).

George and Chris Hare are cycling the London to Paris Charity event in May and have to raise a minimum amount of money in order to enter.

Liz and Linda Neale produced a delicious meal, with contributions from Margaret How. Not a crumb was left at the end of the evening! Considering that Liz had only returned from Ireland the previous evening, following the sad and sudden death of her mother, she did remarkably well to cheerfully feed us all.

I think that the generosity of all those present far exceeded expectations. The raffle raised over £290.00 with most of the many prizes being donated. Lyneth Howells donated a wonderful painting which was auctioned raising a good sum of money.

The bar was busy and was bravely "manned" by Sarah Kelloway who had no idea that there was a function planned !! She chose Friday as one of her duties, "as they are usually quiet." Well done Sarah and also Simon Limburn who helped her.

Of course it would not have been so much fun if we had not had our very own CREEKERS to play and sing for us. We now have new words to sing to "The Drunken Sailor" involving cyclists and of course the Push Bike song was obviously written with George and Chris in mind.

We finally let the exhausted band stop playing somewhere after 11.00pm.

Of course the hardest work is still to be done by George and Chris who are training very hard at least twice a week, travelling 30-40 miles per trip out. This will increase as the days lengthen and the Big Date draws nearer. George and Chris are sometimes joined by other club members and would welcome anyone who would like to accompany them on their practice rides. It is still possible to donate to this Charity (see above). I know that George and Liz are immensely grateful for all your support and don't forget that whatever you give will be raised by 25% if you are a tax payer and Gift Aid your donation.

Latest update.

Below is a letter sent to George Thomson in appreciation of the donation sent to MS Trust of £1249.49 raised at the charity night at the Club on Friday night. It also gives some idea of what the money raised will be spent on. It is certainly a good cause.



www.mstrust.org.uk

Mr George Thomson
35 High Mead
FAREHAM
PO15 6BN

1 March 2017

Dear George,

Thank you for helping to make sure that no one has to manage MS alone.

I would like to thank you for your recent donation of £1,246.49 to the MS Trust, money raised through an event at your yacht club towards your and Chris Hare's London to Paris cycle rides. Your donation will be put to good use, funding support for people living with multiple sclerosis (MS) across the UK.

We have just launched a major new programme to ensure that everyone in the UK with MS has access to an MS specialist nurse. MS nurses can make a world of difference for people living with MS. However, many MS nurses have to care for more people with MS than they can manage. And their services are coming under increasing pressure.

We estimate that 2 in 3 people with MS – around 68,000 people – live in an area where there aren't enough MS nurses. This puts pressure on the service they are able to deliver, and means that people with MS may be missing out on the specialist care they need.

We already support and train all the MS nurses in the country. Now we are going one step further by funding MS nurse posts in the areas that need them the most.

In the first phase of our nurse funding programme, we will fund three new MS nurses in the areas where they will have the biggest impact. This is a huge project for a charity of our size but with help from people like you, we believe we can make a life-changing difference for thousands of people with MS.

Thank you again for your generous support and best of luck with your continued fundraising.

Yours sincerely

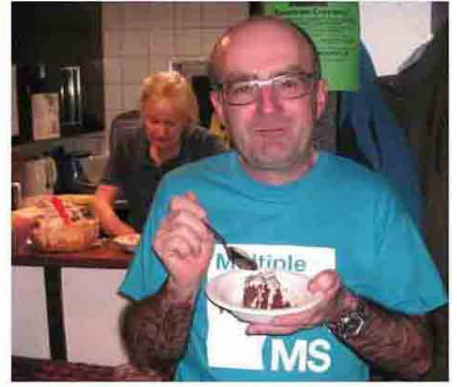
A handwritten signature in blue ink, appearing to read "Laura", is written over a light blue horizontal line.

Laura Percival
Fundraising Officer

The MS Trust and our trading companies value your support and promise to protect your privacy. To read our policy go to www.mstrust.org.uk/privacy or contact us for a copy.

Multiple Sclerosis Trust Spirella Building, Bridge Road, Letchworth Garden City, Hertfordshire SG6 4ET
T 01462 476700 F 01462 476710 E info@mstrust.org.uk

A company limited by guarantee incorporated in England and Wales. Registered company no. 4247766. VAT no. 836 4756 95. Registered charity no. 1088353



It's hard work in the galley Linda. It obviously tastes good & Chris needs building up.



The Creekers played.....and the audience swayed



Dave enjoyed it and Liz loved the funds rolling in. Even your editor had her purse out.



The blue teeshirts obviously gave George & Chris the 'Girl Pulling Power'



The bar remained busy throughout and the singing got better the more we drank!

Queen's Harbour Master Portsmouth LNTM NO 19/17
NEW WIDENED AND RE-ORIENTATED PORTSMOUTH APPROACH CHANNEL

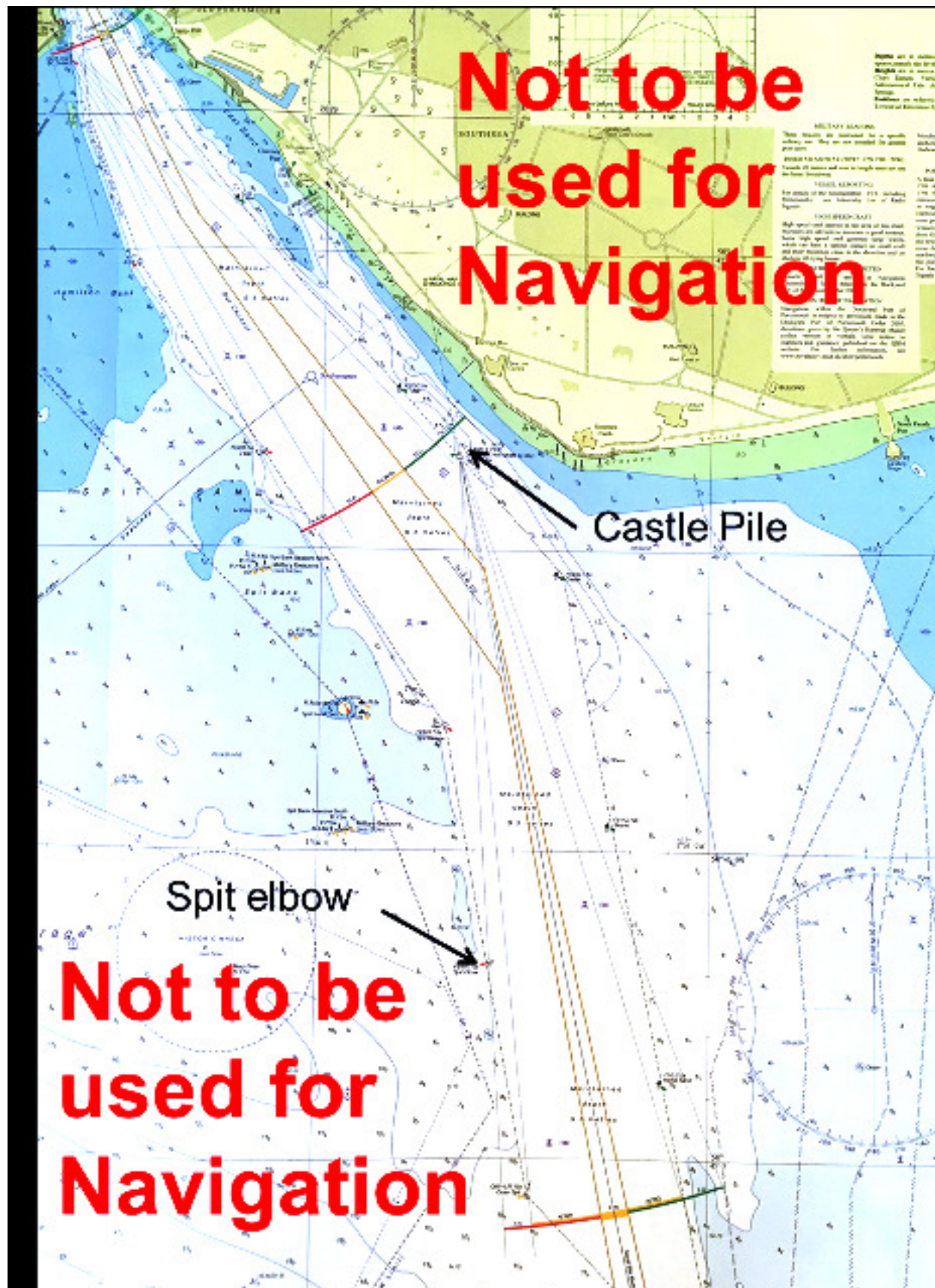
1. NOTICE IS HEREBY GIVEN by the Queen's Harbour Master Portsmouth, that in order to bring in to service the widened and re-orientated Portsmouth Approach Channel, an updated Admiralty Chart 2625 (Approaches to Portsmouth) will be published by the United Kingdom Hydrographic Office (UKHO) on 2 March 2017, and that the navigation marks and port entry lights will be adjusted in the days immediately following, to reflect the characteristics, positions and directional light orientations shown on the chart.
2. This notice sets out the process by which these changes will take place, in order to assist the mariner in navigating safely within the approach channel throughout the transition period.
3. The most significant changes include a widening of the approach channel in preparation for the Queen Elizabeth Class carriers and a re-orientation of the channel such that the headmark for vessels entering past Outer Spit Buoy will change from Southsea Castle to a transit of the new 'Castle Pile' (50 46.67N 001 05.65W) with Southsea War Memorial.
4. On 2 March 2017, the new version of Admiralty Chart 2625 will be published. This will display the latest surveyed depths in and around the Approach Channel, as well as the planned positions, names, and characteristics for the Approach Channel lateral marks, the positions of new port entry lights and re-orientation of the Fort Blockhouse directional light. It will also include amends to the notes and the new position of the Small Boat Channel.
5. Over the following days, the workboat SD NAVIGATOR will move the channel lateral buoys to their new charted positions and change their light characteristics. This work is programmed to take approximately 4 days, although may take longer or shorter subject to weather conditions. A NAVWARN will be sent on the morning of 2 Mar 17, to notify mariners that the new chart has been published and to list the positions and characteristics of buoys and port entry lights at that time. Thereafter, the positions and characteristics of the buoys in place will be updated daily at approximately 1600 by NAVWARN, clearly stating which have been moved in accordance with the new chart, and which remain in their old position in accordance with the previous version or any associated correction or NAVWARN.
6. The majority of lateral marks will retain their current names and have relatively corresponding positions within the new channel as to the old one. However, Ridge buoy will be repositioned between Outer Spit Buoy and Spit Refuge, and be renamed Spit Elbow.

(See chart on page 7)
7. Once all lateral marks have been moved, the following changes to directional lights will take place:
 - a. The current directional port entry light on Fort Blockhouse will be switched off and a new one put in place, orientated to the new channel and with amended characteristics.
 - b. Southsea Castle directional and isophase lights will be switched off.
 - c. Castle Pile directional light will be switched on.
8. Once all changes have been made, a final NAVWARN will be published detailing the full list of characteristics. This will remain in force for a period of 12 weeks in order to provide sufficient and reasonable time for mariners and their chart providers to complete their updates.
9. The latest NAVWARNs and LNTMs will be published on the QHM website, www.royalnavy.mod.uk/qhm/portsmouth; users may subscribe to the mailing list in order to receive updates as they are published.

S O Hopper
Queen's Harbour Master

NEW WIDENED AND RE-ORIENTATED PORTSMOUTH APPROACH CHANNEL

Details on page 6



Images of Italian Bistro Night

Cheers everyone!



The Galley Team



Margaret
(Both looking happy)

Terry

Put him down
Carol



Derek enjoys
the wine

It wasn't that
big John

Emergency
barman Dave



Love the
tie Steve

Eat up Nicola

Peter takes over the bar

The Diners



Shirl & Nina
looking serene